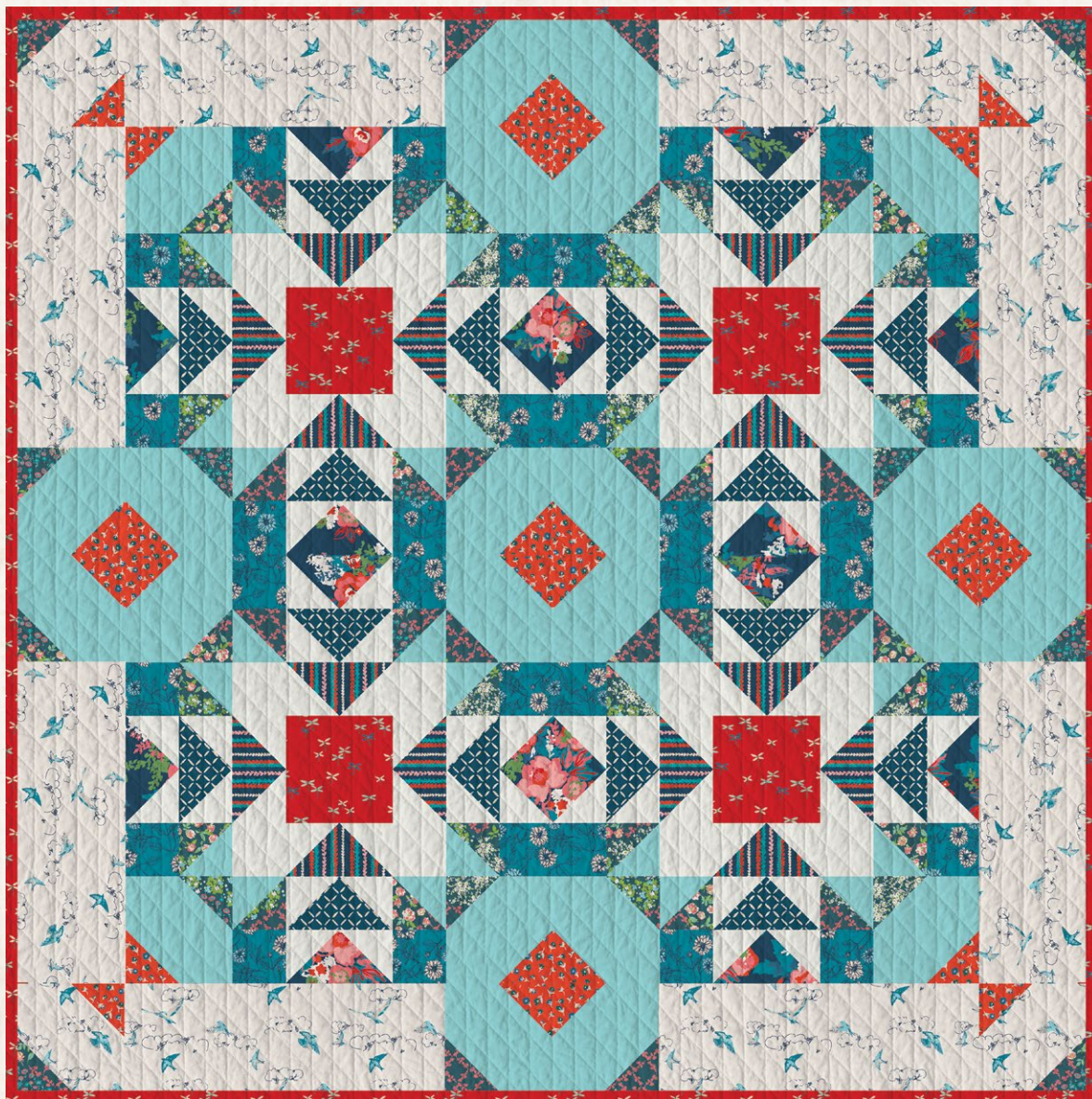


LILY POND

BY SHARON HOLLAND



FREE PATTERN

XXXXXXXXXXXXXXXXXXXXXXXXXXXX



LILYPOND

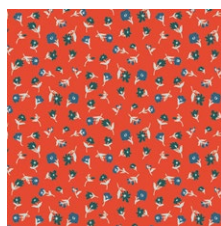
Everlasting



FABRICS DESIGNED BY SHARON HOLLAND



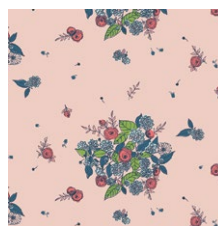
EVR-86550
BOUQUET MUSE



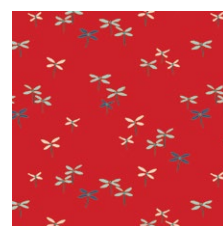
EVR-86551
CHERISHED WISHES



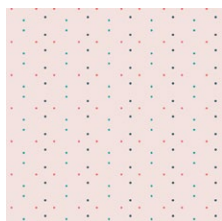
EVR-86552
CROSSED PATHS



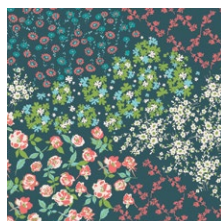
EVR-86553
PROMISES



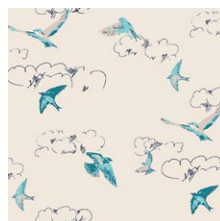
EVR-86554
FLUTTER BUNDS



EVR-86555
DOTTED VEIL



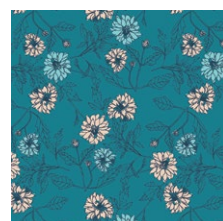
EVR-86556
FLOWER KEEPER



EVR-86557
SUMMER'S DANCE



EVR-86558
FROM THE HEART



EVR-86559
SOMETHING BLUE



FEEL THE DIFFERENCE © 2019 Courtesy of Art Gallery Quilts LLC. All Rights Reserved.

LILY POND

FINISHED SIZE | 60" X 60"

FABRIC REQUIREMENTS

Fabric A	EVR-86554	½ yd.
Fabric B	EVR-86556	¾ yd
Fabric C	EVR-86551	¾ yd
Fabric D	EVR-86559	¾ yd
Fabric E	EVR-86557	1 yd
Fabric F	EVR-86550	¼ yd
Fabric G	EVR-86552	¼ yd
Fabric H	EVR-86558	⅓ yd
Fabric I	PE-403	1 yd
Fabric J	PE-408	⅞ yd.

BACKING FABRIC

EVR-86555 4 yds. *(Suggested)*

BINDING FABRIC

Fabric A *(Included)*

CUTTING PREPARATIONS

Fabric A:

- Cut one (1) 6½" x WOF" strip

Sub cut:

- Four (4) 6½" squares.
- Cut seven (7) 1½" x WOF strips for binding.

Fabric B:

- Cut one (1) 7¾" x WOF strip.

Sub cut:

- Four (4) 7¾" squares.
- Cut three (3) 3½" x WOF strips.

Sub cut:

- Twenty eight (28) 3½" squares.

Fabric C:

- Cut three (3) 3½" x WOF strips.

Sub cut:

- Twenty eight (28) 3½" squares.

Fabric D:

- Cut three (3) 3½" x WOF strips.

Sub cut:

- Thirty two (32) 3-½" squares.

Fabric E:

- Cut six (6) 6½" x WOF strips.

Sub cut:

- Eight (8) 6½" x 18-½" strips
- Four (4) 6-½" squares.

Fabric F: (No waste flying geese 4 at time)

- Cut one (1) 7¼" x WOF" strip.

Sub cut:

- Four (4) 7¼" squares.

Fabric G: (No waste flying geese 4 at time)

- Cut one (1) 7¼" x WOF" strip.

Sub cut:

- Four (4) 7¼" squares.

Fabric H:

- Cut three (3) 3½" x WOF" strip.

Sub cut:

- Sixteen (16) 6½" x 3-½" Rectangles **(Do not do the 4 no waste method because of the direction of the stripes)**

Fabric I:

- Cut one (1) 7¾" x WOF" strip.

Sub cut:

- Four (4) 7-¾" squares.

- Cut four (4) 6½" x WOF strips.

Sub cut:

- Twenty four (24) 6½" squares

Fabric J:

- Cut five (5) $3\frac{7}{8}$ " x WOF strips.

Sub cut:

- Forty eight (48) $3\frac{7}{8}$ " squares.

- Cut Two (2) $3\frac{1}{2}$ " x WOF " strips.

Sub cut:

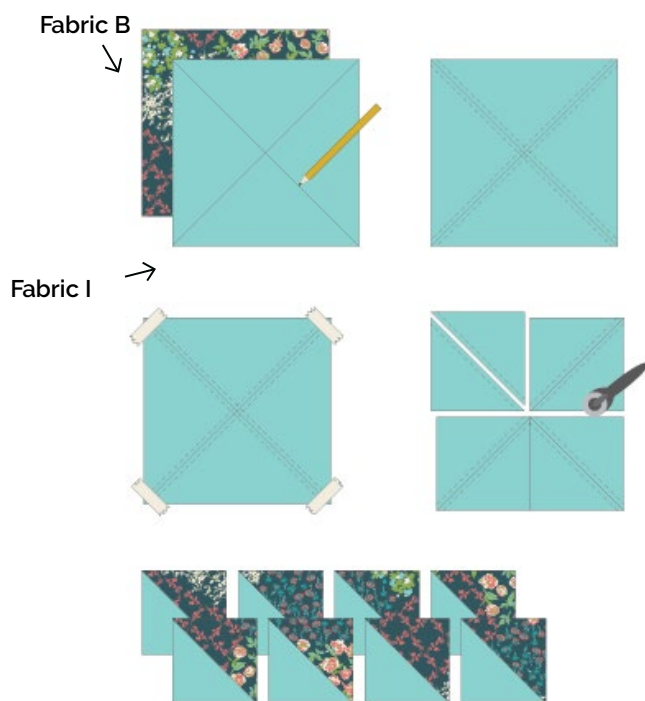
- Sixteen (16) $3\frac{1}{2}$ " squares.

CONSTRUCTION

Sew all rights sides together with $\frac{1}{4}$ " seam allowance.

Half Squares Triangles (HST)

- Draw a diagonal line on the wrong side of all the $7\frac{3}{4}$ " from fabric **I** squares
- Draw another diagonal from the remaining corners.
- Place a marked fabric square right sides together with a $7\frac{3}{4}$ " from fabric **B** squares. Sew a $\frac{1}{4}$ " seam on each side of the drawn line. In the same manner, stitch on each side of the remaining diagonal line.
- Cut the square quarter-sections apart on the drawn line. Open and press. Makes 8 half-square triangle (HST) units. Make a total of 32 HST units. Trim units to $3\frac{1}{2}$ " square.



Flying Geese Units

- Draw a diagonal line on the wrong side of all the $3\frac{7}{8}$ " squares from fabric **J**
- Place a marked cream solid square right sides together on the corner of the $7\frac{1}{4}$ " large floral square. In the same manner, place another marked fabric **J** square in the opposite corner as shown. Diagram 2.

Note: The small squares will be overlapped in the center.

- Sew a $\frac{1}{4}$ " seam on each side of the drawn line. Cut apart on the line. Open and press. Makes 2 Flying Geese sections.
- Noting orientation of the drawn line, place a marked fabric **J** square right side together on Fabric **F** corner of one Flying Geese section as shown on diagram 2
- Sew a $\frac{1}{4}$ " seam on each side of the drawn line. Cut apart on the line to make 2 Flying Geese units. Open and press.
- Repeat step 4 with the remaining section for a total of 4. Make a total of (16) $3\frac{1}{2}$ " x $6\frac{1}{2}$ " fabric **J** / Fabric **F** Flying Geese (Units A). In the same manner, make a total of 16 Fabric **G** / Fabric **J** (units **B**) and 16 Fabric **H** / Fabric **J** (unit **C**)



DIAGRAM 1



DIAGRAM 2

Unit A



X 16

Unit B



X 16

Unit C



X 16

DIAGRAM 3

Corner Units

- Draw a diagonal line on the wrong side of each 3-½" Fabric **B** and **C** squares.
- Noting orientation, place a marked 3-½" Fabric **B** square right sides together on a corner of a 6-½" Fabric **I** square. Sew on the drawn line.

Tip: Sewing a needle-worth just outside the line on the corner side will keep the unit square.

- Trim ¼" past the line. Press open. Noting orientation, repeat on the diagonally opposite corner with a marked Fabric **C** square. The trim. Makes one 6-½" square Corner unit. Make a total of 16 **Corner units A**.
- In the same manner as in Step 2, make a total of 12 **Corner units B** using the 6-½" Fabric **E** squares and remaining of Fabric **B** and **C** squares

XX



DIAGRAM 4

Corner Units A



Corner Units B



DIAGRAM 5

Side Section Assembly

- Noting orientation, sew a 3-½" Fabric **D** square to a Fabric **B-I** HST unit. Make a mirror image section, turning the Fabric **B/I** HST as shown.
- Sew a Flying Geese **unit A** to a Flying Geese **unit B** as shown.
- Noting placement and orientation, sew the Flying Geese section from Step 2 between two sections made in Step 1 to make a Side section. Make a total of 4 Side sections.



DIAGRAM 6

Center Block Assembly

- Arrange four (4) $3\frac{1}{2}$ " Fabric **J** squares, four (4) Flying Geese **units C**, and one (1) $6\frac{1}{2}$ " Fabric **A** square into 3 rows of 3 units and squares each.

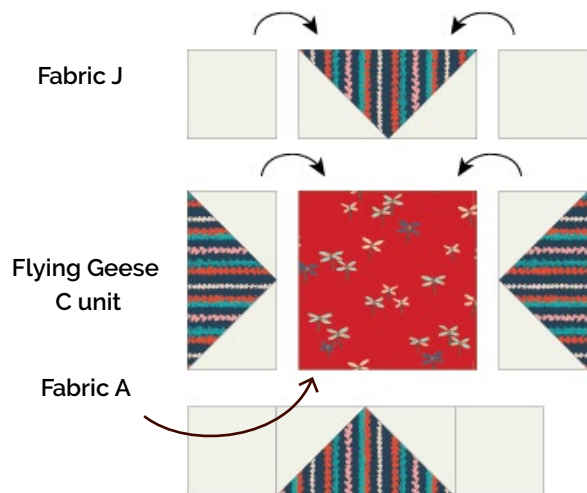


DIAGRAM 7

- Sew into rows. Join the rows to make the center of the block.

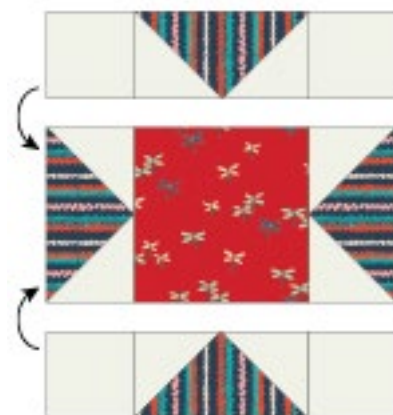


DIAGRAM 8

Block Assembly

- Arrange 4 Side sections, one block center, and 4 **Corner units A** into 3 rows of 3 sections each. Sew into rows.
- Join the rows to make one block. Make a total of 4 blocks.



DIAGRAM 9

- Arrange 4 Side sections, one block center, and 4 **Corner units A** into 3 rows of 3 sections each. Sew into rows. Join the rows to make one block. Make a total of 4 blocks.
- Sew the blocks into 2 rows of 2 blocks each. Join the rows.
- Referring to the Quilt Assembly Diagram and noting placement and orientation, sew two **Corner units B** between two (2) 6-½" x 18-½" Fabric **E** strips. Make a total of 2. Sew to the sides of the quilt.
- In the same manner, sew two (2) 6-½" x 18-½" Fabric **E** strips between 4 **Corner units B** and sew to the remaining sides of the quilt.
- Quilt as desired. Use Fabric **A** strips for the binding.



DIAGRAM 10

XXXXXXXXXXXXXXXXXXXXXXXXXXXXXXXXXXXX

Congratulations
& *enjoy*

XXXXXXXXXXXXXXXXXXXXXXXXXXXXXXXXXXXX



artgalleryfabrics.com

NOTE: While all possible care has been taken to ensure the accuracy of this pattern, We are not responsible for printing errors or the way in which individual work varies. Please read instructions carefully before starting the construction of this quilt. If desired, wash and iron your fabrics before starting to cut.

© 2019 Courtesy of Art Gallery Quilts LLC. All Rights Reserved.